



OFFICE BUILDNG | FOR LEASE

436 S MUSTANG RD, YUKON, OK 73099

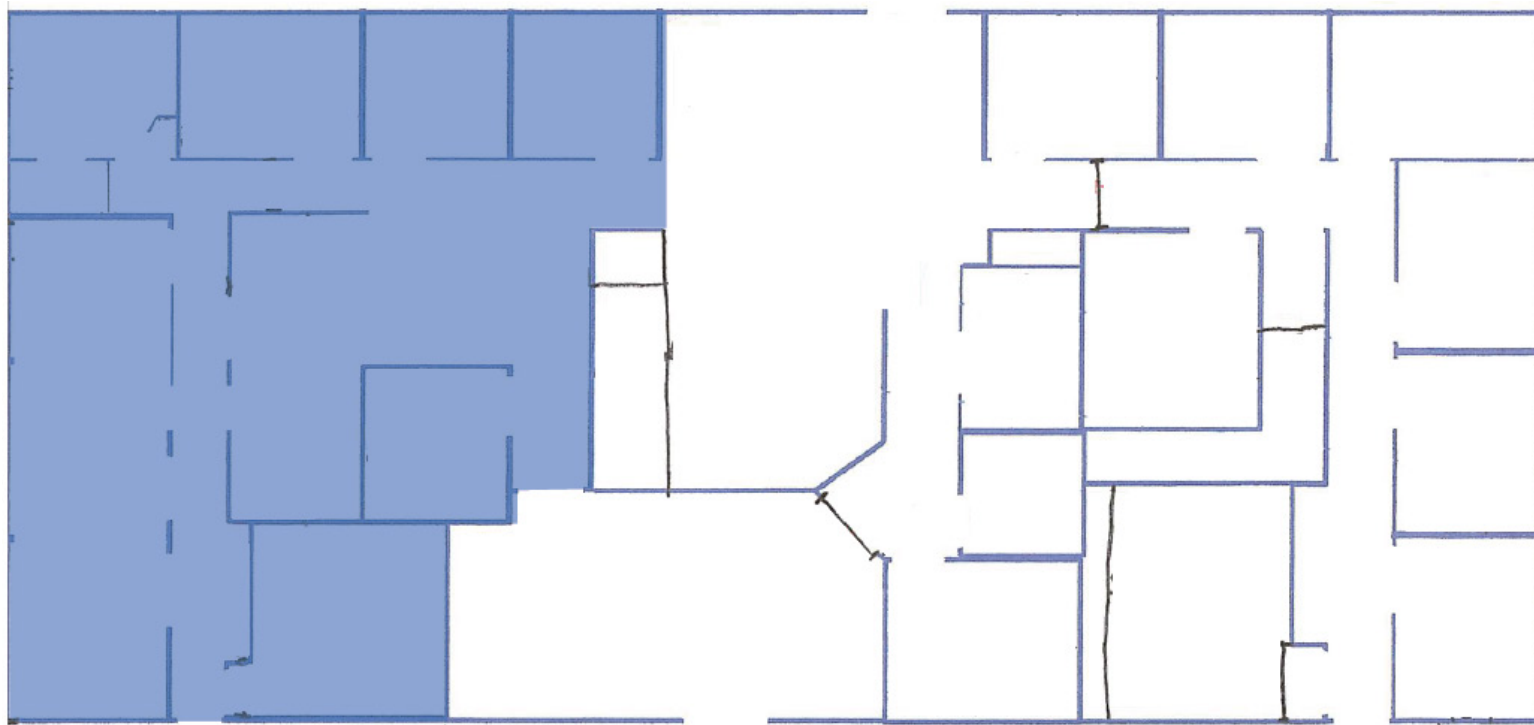
VICKI KNOTTS

vknotts@newmarkrp.com

O: 405.879.4761 C: 405.226.3916

NEWMARK
ROBINSON PARK

436 S MUSTANG RD / FOR LEASE



PROPERTY OVERVIEW

Former medical office building located in the Yukon submarket available for lease. Located in the southeast quadrant of Mustang Road and Reno, this building offers close proximity to I-40 and the Kilpatrick Turnpike with several dining destinations nearby.

The space features existing medical build-out, including water in most rooms. Ownership is open to making modifications to accommodate the right tenant's needs.

DETAILS

Lease Rate	\$20 / SF (MG)
Building Size	1,500 SF
Year Built	2001
Lot Size	0.16
Market	Yukon

HIGHLIGHTS

Close proximity to I-40 and Kilpatrick Turnpike
Well-maintained property
Multiple offices with water and X-ray areas
Surrounded by a variety of dining and retail options
Located in the expanding Yukon submarket