



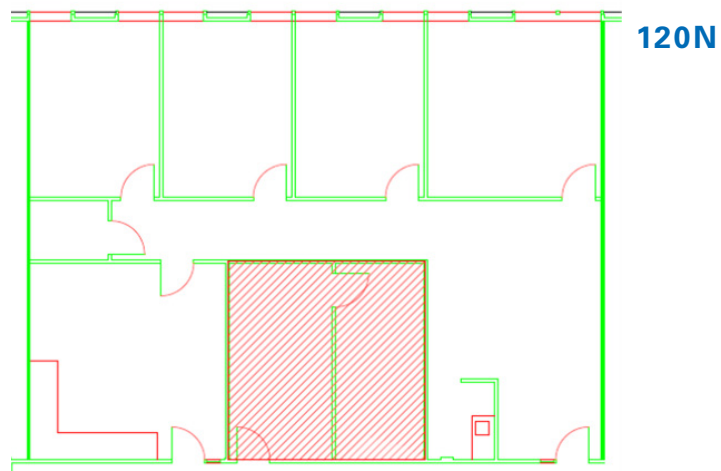
# 300 MERIDIAN PLACE | FOR LEASE

300 N MERIDIAN AVENUE, OKLAHOMA CITY, OK 73107

**BRAD RICE**  
brice@newmarkrp.com  
C: 918.269.8586

**NEWMARK**  
ROBINSON PARK

# 300 MERIDIAN PLACE / FOR LEASE



## PROPERTY OVERVIEW

This multi-tenant office building was built in 1982 and renovated in 2009. The main entry has been refurbished with Venezuelan marble floors, imported chandeliers, and the construction of a security guard desk. The building has on-site security and controlled 24 hour access, as well as, high-speed data/communications connectivity. Additionally, all restrooms have been renovated and updated as well. Twenty-four hour tenant controlled HVAC available.

## DETAILS

<b>Lease Rate</b>	\$12.00 PSF
<b>Building Size</b>	79,371 SF
<b>Suite 120N</b>	1,987 SF
<b>Lease Type</b>	Full Service Gross
<b>Lease Term</b>	3-5 Years
<b>Zoning</b>	O

## PROPERTY HIGHLIGHTS

- Large floor plates for tenants of any size
- On-site security
- Controlled building access
- Ample surface parking
- Convenient to I-40 and airport
- Restaurants and hotels within 1 mile