



300 MERIDIAN PLACE | FOR LEASE

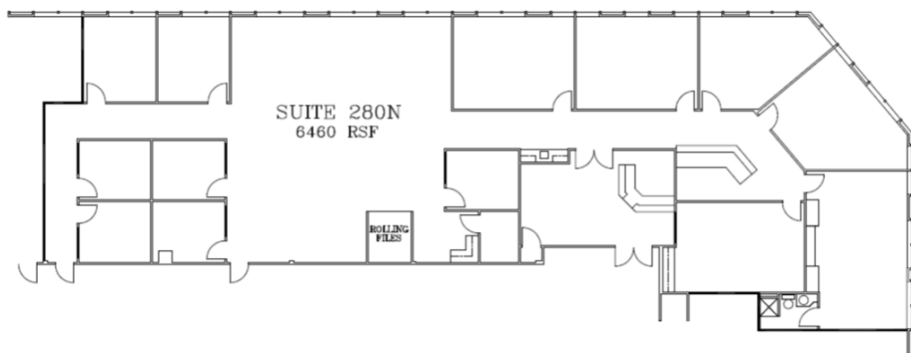
300 N MERIDIAN AVENUE, OKLAHOMA CITY, OK 73107

BRAD RICE
brice@newmarkrp.com
C: 918.269.8586

NEWMARK
ROBINSON PARK

300 MERIDIAN PLACE / FOR LEASE

280N



PROPERTY OVERVIEW

This multi-tenant office building was built in 1982 and renovated in 2009. The main entry has been refurbished with Venezuelan marble floors, imported chandeliers, and the construction of a security guard desk. The building has on-site security and controlled 24 hour access, as well as, high-speed data/communications connectivity. Additionally, all restrooms have been renovated and updated as well. Twenty-four hour tenant controlled HVAC available.

DETAILS

| | |
|---------------|--------------------|
| Lease Rate | \$12.00 PSF |
| Building Size | 79,371 SF |
| Suite 280N | 6,460 SF |
| Lease Type | Full Service Gross |
| Lease Term | 3-5 Years |
| Zoning | O |



PROPERTY HIGHLIGHTS

- Large floor plates for tenants of any size
- On-site security
- Controlled building access
- Ample surface parking
- Convenient to I-40 and airport
- Restaurants and hotels within 1 mile