



GREENFIELD BUSINESS PARK | LAB/FLEX SPACE FOR LEASE

235 N MACARTHUR BLVD., SUITE 100, OKLAHOMA CITY, OK

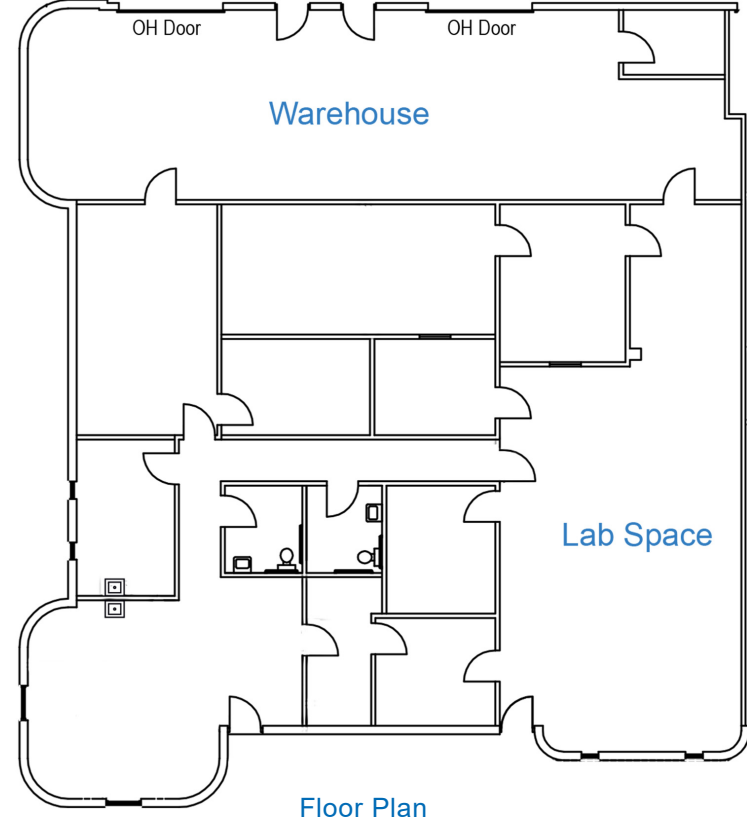
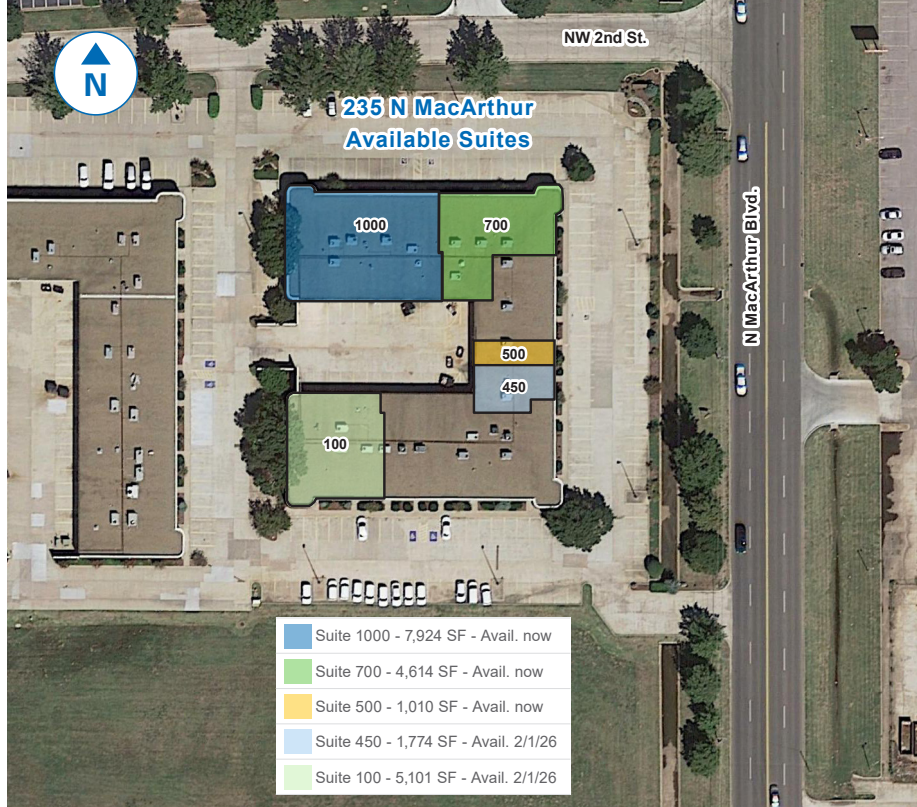
KARLEY HARPER, CCIM
kharper@newmarkrp.com
C: 405.371.3498

KRIS DAVIS, SIOR
kgdavis@newmarkrp.com
C: 405.202.9525

BRETT PRICE, CCIM, SIOR
bprice@newmarkrp.com
C: 405.613.8380

NEWMARK
ROBINSON PARK

235 N MACARTHUR, SUITE 100 | LAB/FLEX SPACE FOR LEASE



DETAILS

Available SF	5,101 SF
Lease Rate	Contact Broker
Building Size	31,017 SF
Cross Streets	NW 2nd & N MacArthur

HIGHLIGHTS

4,238 SF office space
872 SF warehouse space
2 overhead doors
Flexible lease terms

PROPERTY OVERVIEW

Greenfield Business Park is located 1/2 mile north of I-40 and two miles west of I-44, which allows for convenient and quick access to Oklahoma's interstate system. The property is located in a densely populated commercial area with a multitude of restaurants and national retailers.