



GREENFIELD BUSINESS PARK | LAB/FLEX SPACE FOR LEASE

235 N MACARTHUR BLVD., SUITE 150, OKLAHOMA CITY, OK

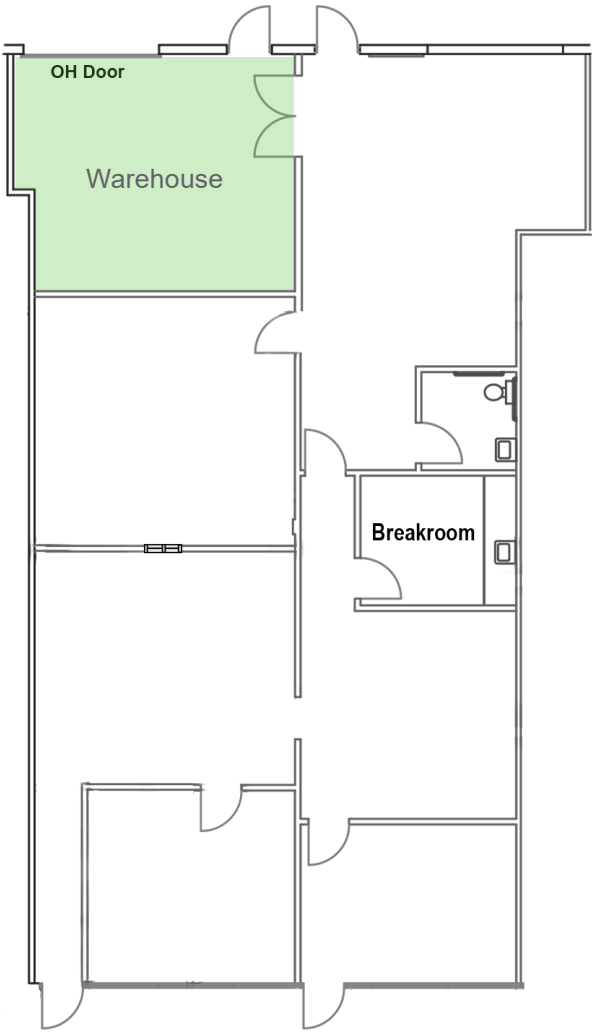
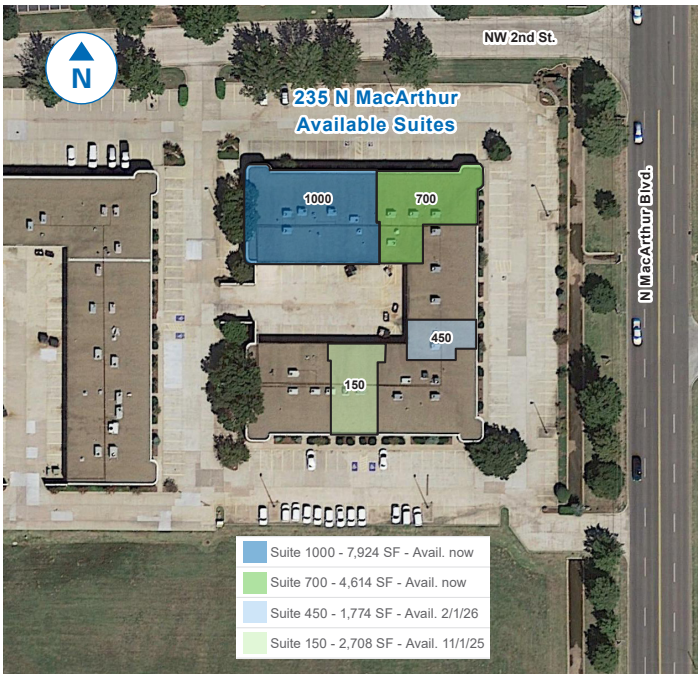
KARLEY HARPER, CCIM
kharper@newmarkrp.com
C: 405.371.3498

KRIS DAVIS, SIOR
kgdavis@newmarkrp.com
C: 405.202.9525

BRETT PRICE, CCIM, SIOR
bprice@newmarkrp.com
C: 405.613.8380

NEWMARK
ROBINSON PARK

235 N MACARTHUR, SUITE 150 | LAB/FLEX SPACE FOR LEASE



Floor Plan



DETAILS

Available SF	2,708 SF
Lease Rate	Contact Broker
Building Size	31,017 SF
Cross Streets	NW 2nd & N MacArthur

HIGHLIGHTS

- 2,329 SF office space
- 379 SF warehouse space
- 1 overhead door
- Flexible lease terms
- Available 11/1/2025

PROPERTY OVERVIEW

Greenfield Business Park is located 1/2 mile north of I-40 and two miles west of I-44, which allows for convenient and quick access to Oklahoma's interstate system. The property is located in a densely populated commercial area with a multitude of restaurants and national retailers.