



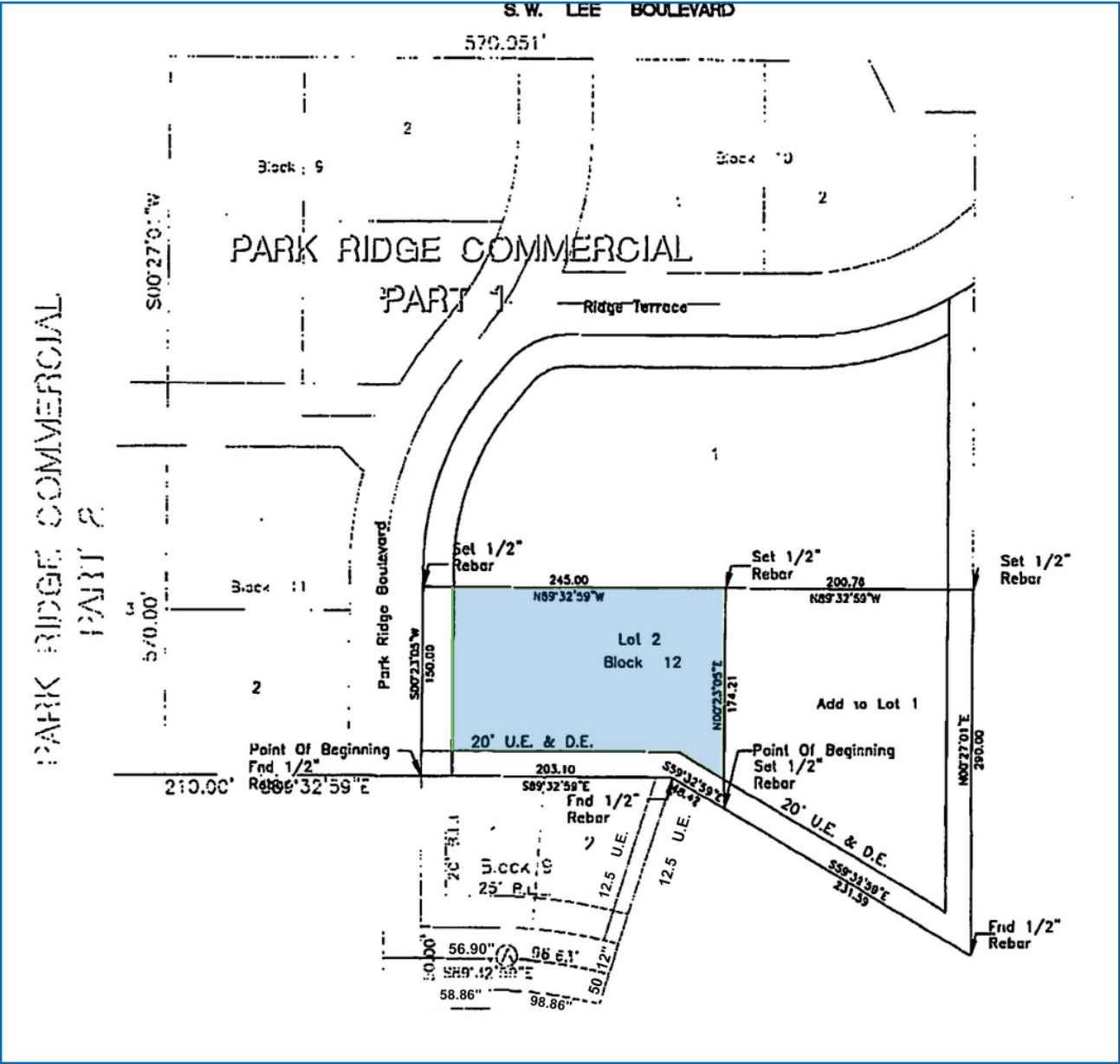
1.07± ACRES | FOR SALE

PARK RIDGE BLVD. & RIDGE TERR., LAWTON, OK

BRANDON BIRDWELL
bbirdwell@newmarkrp.com
C: 405.612.4639

NEWMARK
ROBINSON PARK

LAND FOR SALE / 1.07 ACRES± / FOR LEASE



DETAILS

Sale Price	\$179,000
Lot Size	1.07 Acres±
Price/SF	\$38.00/SF
Market	Lawton

PROPERTY OVERVIEW

This approximately 1.07 acre property is located on Park Ridge Blvd. in Lawton, OK, offering a prime opportunity for development or personal use. Conveniently positioned near major roads, this parcel ensures easy access to all the amenities Lawton has to offer. The property is just 3 miles from downtown Lawton and is easily accessible to nearby attractions such as Fort Sill, Museum of the Great Plains, etc. Additionally, the property is positioned near key amenities, such as shopping centers, parks, and medical facilities, making it a appealing choice for business developments. This land represents an exceptional opportunity to invest in a growing area with strong potential for future development.