



# GREENFIELD BUSINESS PARK | FLEX SPACE FOR LEASE

235 N MACARTHUR BLVD., SUITE 1000, OKLAHOMA CITY, OK

**KARLEY HARPER, CCIM**  
kharper@newmarkrp.com  
C: 405.371.3498

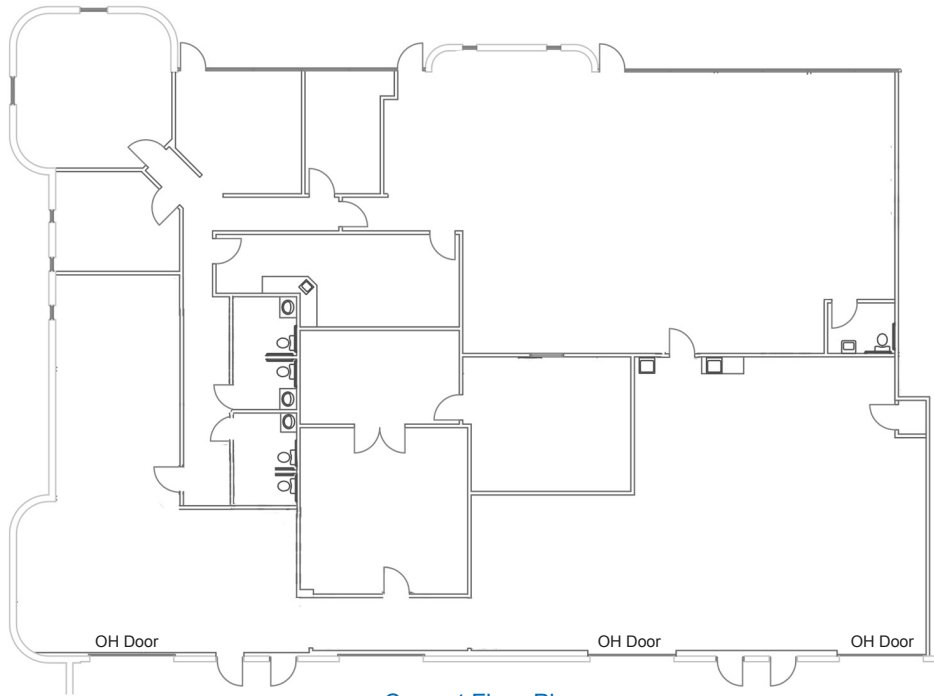
**KRIS DAVIS, SIOR**  
kgdavis@newmarkrp.com  
C: 405.202.9525

**BRETT PRICE, CCIM, SIOR**  
bprice@newmarkrp.com  
C: 405.613.8380

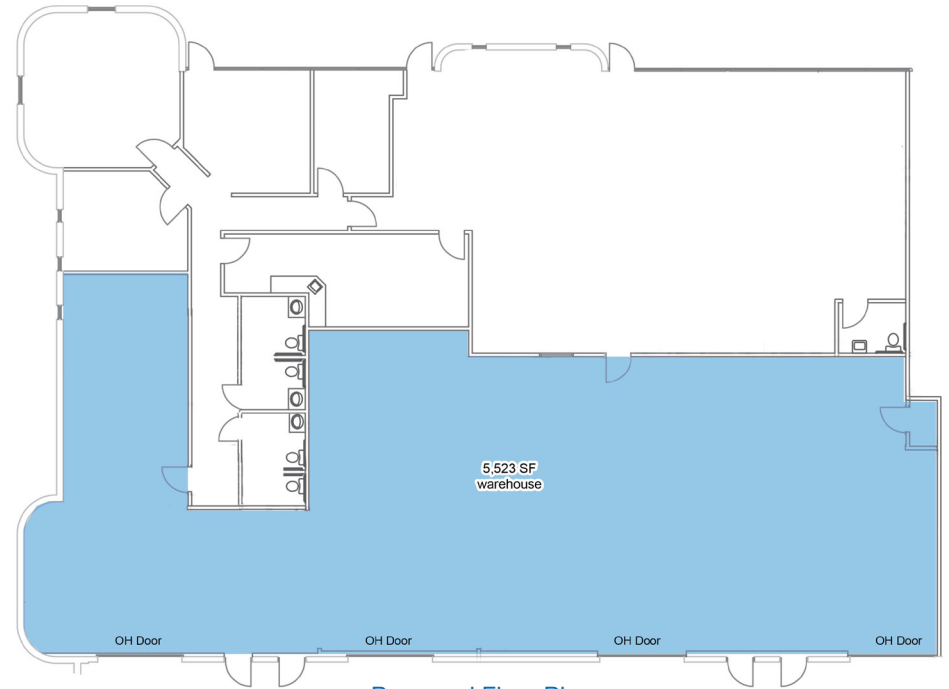
**NEWMARK**  
ROBINSON PARK



# 235 N MACARTHUR BLVD., SUITE 1000 / FLEX SPACE FOR LEASE



Current Floor Plan



Proposed Floor Plan

## DETAILS

Available SF	7,924 SF
Lease Rate	Contact Broker
Building Size	31,017 SF
Market	Oklahoma City
Cross Streets	N MacArthur Blvd. & NW 2nd St.

## HIGHLIGHTS

5,523 SF office space   2,419 SF warehouse space
14' clear height
1 overhead door
Flexible lease terms
Can be combined with neighboring suite for more square footage

## PROPERTY OVERVIEW

Greenfield Business Park is located 1/2 mile north of I-40 and two miles west of I-44, which allows for convenient and quick access to Oklahoma's interstate system. The property is located in a densely populated commercial area with a multitude of restaurants and national retailers.