



RETAIL

PAD SITES | GROUND LEASE OR BUILD TO SUIT

SE/C COVELL RD. & SOONER RD., EDMOND, OK 73034

THE  
RETAIL  
GROUP





## PROPERTY DETAILS

Total Land Size	25 Acres
Pad Site Opportunities	1-15 Acres
Lease Rate	Contact Broker for details

## PROPERTY HIGHLIGHTS

Rare development opportunity within the fastest- growing retail corridor in Edmond

In the bustling corridor with Hilton Garden Inn and Edmond Convention Center, ShowBiz Cinemas, Starbucks, Crest Foods and planned Whole Foods Market

Proximity to I-35 and major healthcare employers

## SNAPSHOT



**Estimated Vehicles/Day**  
E Covell Rd  
12,400 VPD



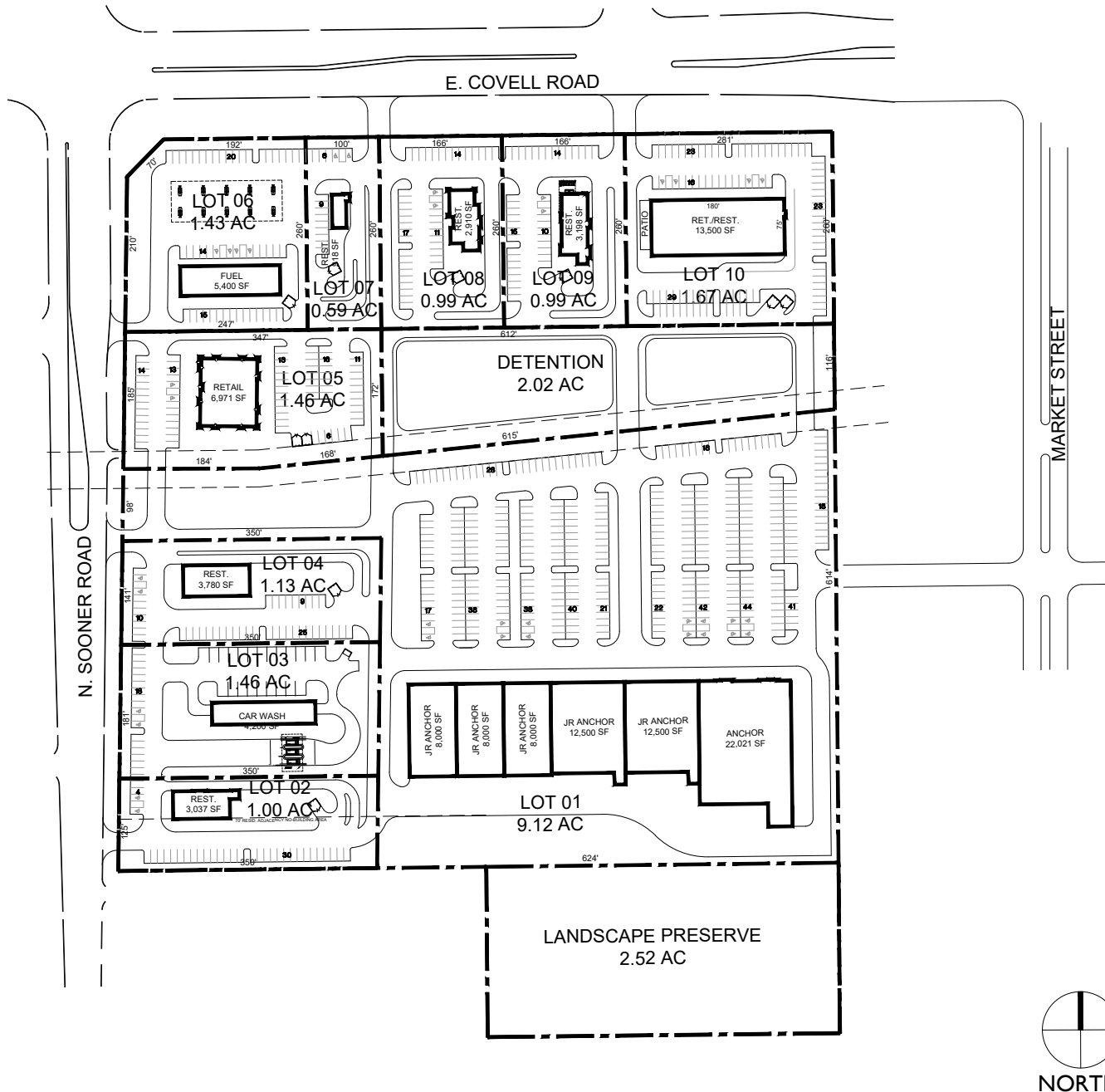
**Avg. HH Income**  
3 mi Radius  
\$180,966



**Population**  
5 mi Radius  
87,474

SE/C COVELL RD. & SOONER RD., EDMOND, OK 73034 | FOR GROUND LEASE OR BUILD TO SUIT









THE  
RETAIL  
GROUP

JAY COHLMIA  
jaycohlmia@newmarkrp.com  
O: 405.602.2989

MICHAEL RAPELLA  
mrappella@newmarkrp.com  
O: 405.600.6342

211 N. Robinson, Ste 600N OKC, OK, 73102  
110 W. 7th, Ste 2600 Tulsa, OK, 74119  
for more information, visit us at  
**NEWMARKRP.COM**

The information contained herein was obtained from sources believed reliable; however, Newmark Robinson Park makes no guarantees, warranties or representations as to the completeness or accuracy thereof. The presentation of this property is submitted subject to errors, omissions, change of price or conditions prior to sale or lease, or withdrawal without notice. Independently Owned and Operated.