



CROWN HEIGHTS OFFICE CENTER | FOR LEASE

1024 NW 47TH STREET, OKC, OK 73118

BRAD RICE

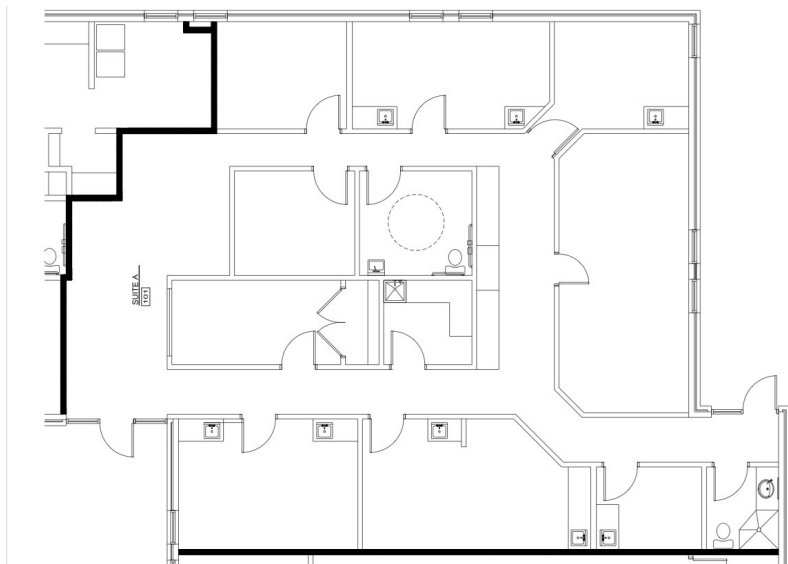
brice@newmarkrp.com

O: 405.600.6856 C: 918.269.8586

NEWMARK
ROBINSON PARK

1024 NW 47TH STREET / FOR LEASE

SITE PLAN



PROPERTY OVERVIEW

Crown Heights Office Center for lease near the highly desirable Western Avenue corridor in Uptown OKC. With its prominent location, this office park offers easy access to both I-44 and I-235, and is minutes away from Penn Square Mall, Nichols Hills, St. Anthony's Hospital, Integris Health Baptist Medical Center, OU Health Complex, the Oklahoma State Capitol and downtown OKC. There are plenty of retail and dining options nearby off Western as well as around the Classen Curve area and NW 63rd Street. There is currently one space available at 2,615 SF. Suite is ideally suited for medical users.

DETAILS

Lease Rate	\$17.00 SF
Building Size	8,276 SF
Available SF	2,615 SF
Lease Type	NNN
Year Built Renovated	1982 2006
Parking Ratio	4.71/1000
Zoning	O-2

