



GREENFIELD BUSINESS PARK | FLEX SPACE FOR LEASE

235 N MACARTHUR BLVD., SUITE 700, OKLAHOMA CITY, OK

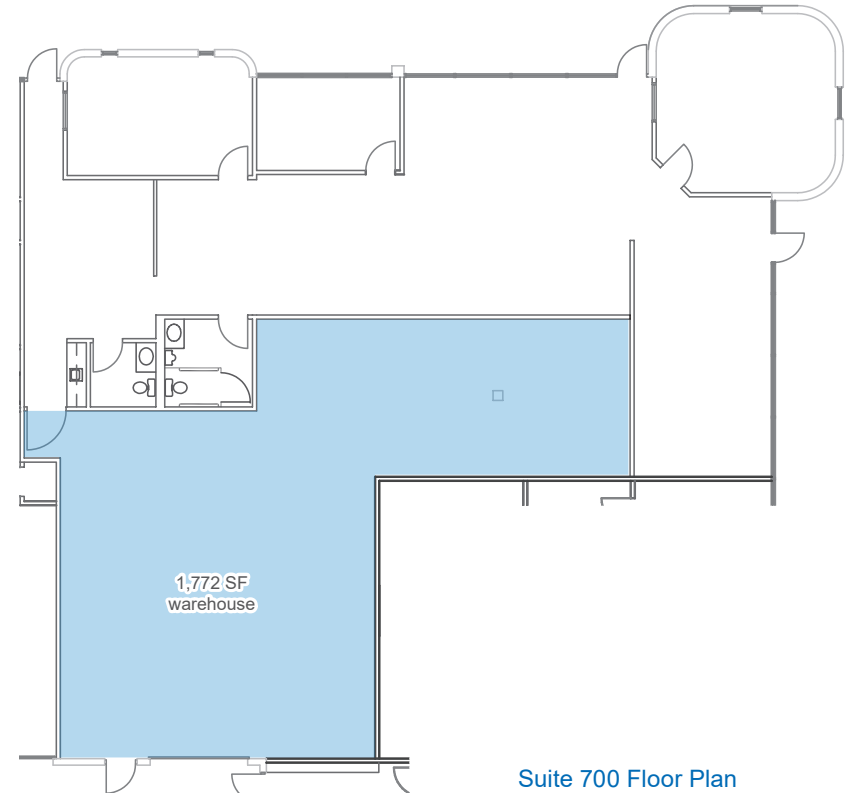
KARLEY HARPER, CCIM
 kharper@newmarkrp.com
 C: 405.371.3498

KRIS DAVIS, SIOR
 kgdavis@newmarkrp.com
 C: 405.202.9525

BRETT PRICE, CCIM, SIOR
 bprice@newmarkrp.com
 C: 405.613.8380

NEWMARK
 ROBINSON PARK

235 N MACARTHUR, SUITE 700 / FLEX SPACE FOR LEASE



DETAILS

Available SF	4,614 SF
Lease Rate	Contact Broker
Building Size	31,017 SF
Market	Oklahoma City
Cross Streets	NW 2nd & N MacArthur

HIGHLIGHTS

2,844 SF office space 1,772 SF warehouse space
Flexible lease terms
(1) 10' grade level door
Climate controlled warehouse
Can be combined with neighboring suites for more square footage

PROPERTY OVERVIEW

Greenfield Business Park is located 1/2 mile north of I-40 and two miles west of I-44, which allows for convenient and quick access to Oklahoma's interstate system. The property is located in a densely populated commercial area with a multitude of restaurants and national retailers.